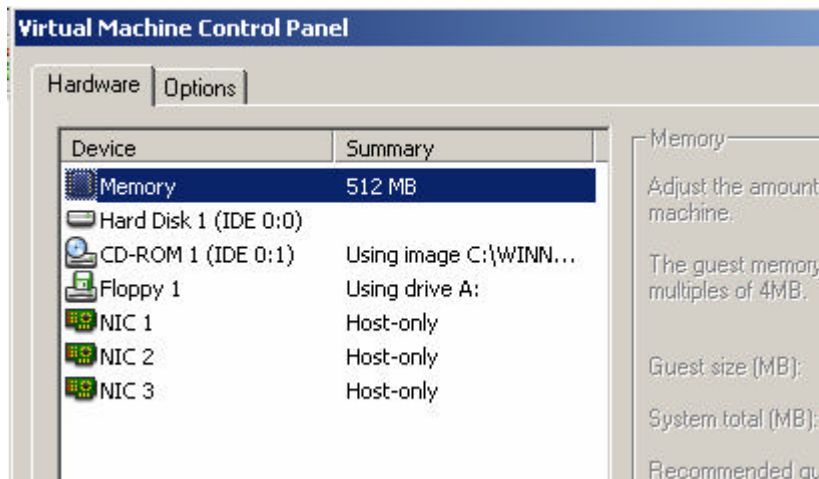


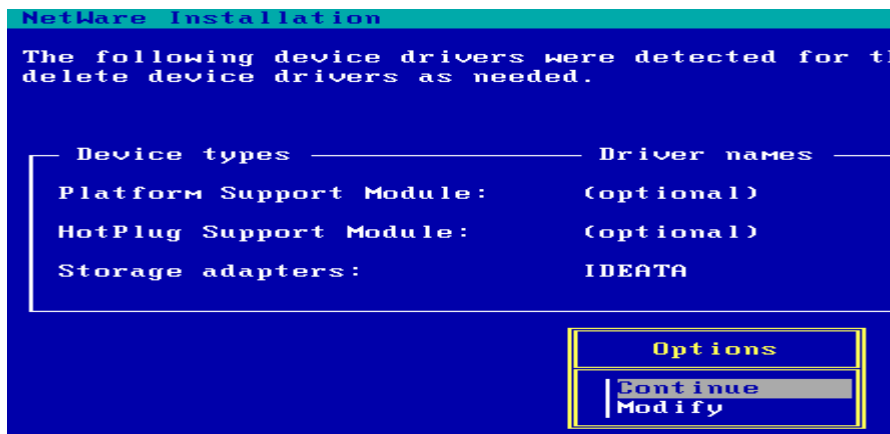
Novell iChain 2.2 Proxy Server in VMware 4 WS

Installation:

- create a new virtual machine and choose “other” as guest operating system.
- edit “yourmachine.vmx” and add “**paevm=true**”
- create a Hard disk on **IDE 0:0**
- change cd-rom to **IDE 0:1**



- Power on the virtual machine and boot from CD (I used an ISO-image off the CD)
- After the imaging off the dos partition the system will reboot. Then it will ask if you want to select hardware drivers manually during install, choose yes
- He automatically detects one IDEATA storage adapter, select continue.



- He finds the network cards, select the second one and repeat three times (I configured three NIC's for this machine in VMware)

```

NetWare Installation

Multiple drivers were found that support the following ADAPTER:
  PROPID: PCI.1022.2000.1022.2000.10  BUS: PCI  CLASS: LAN
  HINNAME: PCI.SLOT_2  HINNUMBER: 2  SUBCLASS: ETHER
Select the driver (LAN) that best matches your system, or press F10.

CNEAMD.LAN | Novell Ethernet PCnetPCI, PCnetPCI_II, PCnet-Fast
PCNTNW.LAN | AMD Ethernet PCnet-FAST,PCnet-FAST+,PCnet-FAST III,PCnet-PRO
PCNTNW.LAN | AMD Ethernet PCnet-FX
PCNTNW.LAN | AMD Ethernet PCnet-PCI, PCnet-PCI_II

```

- You'll see the following screen, select continue

```

Device types ----- Driver names -----
Storage devices:      IDEHD, IDECD
Network boards:      PCNTNW, PCNTNW, PCNTNW
NetWare Loadable Modules: (optional)

Options
Continue
Modify

```

- The drivers will be loaded and the system will reboot....

- You'll need to go through the hardware wizard again and do exactly the same things.

- After the second time, the installation will show the cdrom and disk:

```

The Disk Devices found are as listed below:
UMware Virtual IDE Hard Drive
Device #0 is Target:0, UnitNo:0, HIN:0

The CDR0M list is below:
NECUMWar UMware IDE CDR01 1.00

Remaining buffers to transfer = 15715

```

- After the buffer transfer, the system will create two partitions and reboot...your installation is done...

Have fun.....